



# Yooper Scooper

VOLUME 1, ISSUE 1

APRIL, 2005

NOTE: ARTICLES ARE ORIGINAL OR STOLEN.

*"The two enemies of the people are criminals and government, so let us tie the second down with the chains of the Constitution so the second will not become the legalized version of the first." Thomas Jefferson*

If you have "non-native" weeds, grass, trees, or shrubs on your property (and everyone does) you're in trouble.

Under "invasive species" provisions currently sitting in the Senate's version of the transportation bill, **your property could quickly become the target of radical greens and federal bureaucrats.** The bill's name is the "Safe, Accountable, Flexible and Efficient Transportation Equity Act" or SAFETEA 2005 ("please note\* that it does not yet have a bill number).

Currently, the SAFETEA act contains provisions to "minimize invasive species." This is the foot in the door to federal control of ALL so-called "invasive species" -- something that the greens openly covet. Under the Senate version of SAFETEA, the federal government will dictate to the states what types of grasses and plants are allowed to be planted next to roads. This has nothing to do with science or the environment.

This is about LAND CONTROL and MONEY FOR RADICAL GREEN GROUPS.

**Imagine the Endangered Species Act on steroids.**

Now multiply its devastating effect on property rights one hundred fold. That should give you a pretty good idea of what "invasive species" legislation will mean for property owners in every state, county, and city in this nation. "Invasive species" is the radical greens' key to controlling every square inch of land in the United States. And SAFETEA is the just the beginning.

This nightmare all began when Bill Clinton signed Executive Order 13112 in 1999, creating an "Invasive Species Council" to monitor and control "alien species." What are alien species? According to Clinton's Order, "alien species means, with respect to a particular ecosystem, any species, including seeds, eggs, spores, or other biological material capable of propagating that species, that is not native to that ecosystem."

**Most agricultural crops and animal species clearly fall within the definition of**



**Most agricultural crops and animal species clearly fall within the definition of "alien."**

<http://www.americanpolicy.org/>

**"alien." Domesticated pets, many houseplants, and Kentucky bluegrass used in most lawns and golf courses are already defined as alien species.**

Indeed, this is all the greens and their allies in the federal government need to control all land in the U.S.

Think the invasive species monster can't get any worse? It already has. In 2001, the Invasive Species Council issued a management plan that states: "Council member agencies will work with the Global Invasive Species

Programme (GISP) and other relevant bodies to expand opportunities to share information, technologies, and technical capacity on the control and management of invasive species with other countries, promoting environmentally sound control and management practices."

Invasive species legislation opens the door to federal and international control over private property in the United States. And that's why greens in the Senate are trying to sneak it into the federal transportation bill -- without ANY proper debate.

The House version of the transportation bill has already passed and thankfully does NOT include any invasive species language. But the Senate version (SAFETEA 2005) DOES! Once again, the House is on the right track and the Senate is out in left field.

### ACT NOW!

Call both of your Senators and tell them to DEMAND that any and all "invasive species" provisions are REMOVED from the Senate transportation bill (SAFETEA). Call the Senate Switchboard at (202) 224-3121 and ask for your Senators by name.

To access S. 508, please [click here](#) or cut and paste the url address:

<http://www.govtrack.us/data/us/bills/text/109/s508.pdf>

Media personnel are encouraged to e-mail Carole Williams [cjwms@up.net](mailto:cjwms@up.net) for a synopsis of a few organizations listed as participating members on the Advisory Board. It is up to the media to investigate the allegations of unethical, illegal and unconstitutional practices by the organizations like the NWF, Sierra Club & TNC.

## S. 508: A bill to provide for the environmental restoration of the Great Lakes

### ACION ALERT

A U. S. Senate Bill S.508 is in the midst of being passed. The bill places individuals from such environmentalist organizations as The Nature Conservancy, the National Wildlife Federation and the Sierra Club on the Advisory Board.

When the environmentalist are becoming the invasive species in America, it is time for us as individual citizens to put up or shut-up. The latter is not an option. The Bill, co-sponsored by Levin and Stabehow is another step in detracting both our independence and growth.

It is strongly suggested that you spend some time reading the full proposal that is grossly vague and provides unlimited powers to the group. In what was once a constitutional society, we can only hope that with the marks on the ballots we can recover from our lost heritage.

# THE NATURE CONSERVANCY HAS PLANS FOR THE UPPER PENINSULA; AND THEY DON'T NECESSARILY INCLUDE YOU AND ME

The Following is a cut & paste of TNC's plan for the U. P. as found in their PDF document:

[http://tnc-ecomangement.org/images/MI\\_UP.pdf](http://tnc-ecomangement.org/images/MI_UP.pdf)

## Upper Peninsula, Michigan

Contact: Tina Hall, 906-225-0399, [chall@tnc.org](mailto:chall@tnc.org)

### General Site Description

The Upper Peninsula (UP) of Michigan has become a rare and valuable feature in the eastern United States: a 16,500 square mile forested, largely unfragmented landscape. The UP has extensive shoreline along Lakes Superior, Huron, and Michigan; and includes a varied landscape of limestone, sandstone, metamorphic and igneous outcrops; limestone pavement; drumlin ridges; glacial outwash plains, channels, and other glacial landforms; sand and clay lakeplains; dunes and other shoreline communities; coastal and inland wetlands; and a wide array of lakes and streams. The diversity of terrestrial and aquatic systems, coupled with the moderating effect of the Great Lakes on climate, creates suitable environments for a wide array of species and plant communities. Matrix plant communities include mixed northern hardwood, spruce and fir forests, lowland conifer forests, pine forests, and large patch communities such as peatland. Although no species or communities are entirely restricted to the UP, several species (e.g., dwarf lake iris and Houghton's goldenrod, which are both federally endangered) and rare communities (e.g., alvar and bedrock communities) are best represented here. Many common or declining species that are threatened in other areas enjoy extensive ranges in the UP, in part because of the lack of habitat fragmentation.

The UP is 85% forested and is part of the only east-west forested belt in the United States that is continuous with the forested region stretching from the Pacific Ocean to the Atlantic Ocean across Canada. This band of forest is important for dispersal of mammals, such as wolves, and provides a wide range of habitats for many Neotropical migrant birds that use the area both for nesting and as stopover sites during migration. The UP is an important population source for many songbird species because of its ecological integrity.

While towns and small cities (total population of 300,000) are found across the UP, the area has a vast and wild character where wolves have spread naturally, where moose roam free, and where hunting and fishing are not only major tourist draws, but also a way of life for the local communities. High-value forestry products include high-quality paper, veneer, and sawlogs. A large portion of the global market for highly valued bird's-eye sugar maple comes from two concentrated areas within the UP. The Conservancy has five conservation core sites within the UP, where Conservancy resources will be used to conserve significant biodiversity. These are areas where the Conservancy will emphasize use of traditional protection tools such as acquisition and easements. Core areas will be the major sites of strategic, plan-based protection and stewardship activities. Site conservation plans are either completed or in progress for these five core areas, which currently total 7,000 acres of Conservancy-owned land. However, as staff examines more closely the conservation needs and priorities in the UP, the traditional site-based approach to conservation will likely not sufficiently

protect the unique features found in the UP. The conservation core sites, even when protected, will cease to function *unless* the surrounding working landscape remains as a healthy, functioning system. Working

landscapes of forests are important systems for wolves, breeding birds, migrating birds, and representative vegetative communities. Working landscapes are areas of interaction work with partners and leveraging of Conservancy resources. Within a working landscape, it will be necessary to balance the needs of the natural system, the human economy, and the human community. A site conservation plan for this matrix, working forest is currently being completed, after taking the entire UP background forest to an Efrogmson workshop.

### Conservation Targets

The primary conservation targets of the working forest backdrop include the Laurentian forest community (mosaic of northern hardwoods, boreal forests, and conifer forests), gray wolf, red crossbills, and Neotropical migratory birds.

The *provisional* viability ranks for each target are:

matrix of Great Lakes Laurentian Forest: good

gray wolf: good

red crossbill: good

Neotropical migratory birds: good

### Threats

The identified critical threats include altered species composition due to high deer herbivory, unsustainable forestry practices, fire suppression, operation of drainage and diversion systems, and fragmentation caused by roads, residential development and increased recreation. The major threat of habitat alteration by deer herbivory illustrates the need to plan at a larger scale than just a core site. Heavy snows generated by the Great Lakes result in regular migration of deer of up to 50 miles between the northern and southern parts of the UP. This contributes to overbrowsing, followed by changes in plant community structure and composition, and distribution of associated animal species such as Neotropical migrants. Collectively, the needs of the working forest targets require that we treat the UP as one backdrop, given the fact that dispersal and migration are dependent on habitat availability throughout the UP.

### Stakeholders and Partners

Nearly 45% of the land is in public ownership. There are two national forests (three million acres), two national parks (150,000 acres), one national wildlife refuge (95,000 acres), three state forests and many state parks (about two million acres). Industrial forests cover 1.5 million acres (14%) with each company having somewhat different objectives and approaches to forestry. The remaining land (40%) is owned by small, private landowners, including land owned by the Conservancy and other land trusts.



The UP has a depressed local economy, with a small tax base; however, timber and land values, especially for second homes, are rapidly rising. Competition for land for rural home building is increasing rapidly, particularly land with water frontage.

### Conservation Strategies

Conservation strategies focus on removing or minimizing the development potential of forest land, improving forest management practices in both private, public, and corporate ownership, promoting forest management planning at various scales, and working with the state of Michigan to reduce deer herds.

The major strategies for the forest backdrop include: (1) training agency personnel and implementing the use of fire for ecological benefit; (2) increasing hunting, especially of antlerless deer; (3) working to ban baiting and winter feeding of deer; (4) assisting public agencies in development of recreational plans that reduce the need for new roads and infrastructure; (5) developing and demonstrating forest management practices; and (6) implementing forest landowner outreach programs on forest management and planning (including publications, demonstration projects, and field days).

### Forest Management Strategies

Educate private sector foresters to incorporate sound scientific biodiversity and habitat criteria into the Sustainable Forestry Initiative (SFI) Program, and assist in development of a process for landscape level sustainable forestry planning. – Mead Corporation has funded a Forest Ecologist for The Nature Conservancy to implement this strategy.

Obtain working forest easements. – Currently in negotiation on a 100,000+ acre easement.

On Conservancy owned lands – remove exotic timber plantations and use logging as a regeneration tool to hasten the development of more complex stand structure and composition where it has been overly simplified by logging. – Several preserves targeted for this treatment.

Develop outreach material and educational information for private, non-industrial landowners.

Work with the state legislature and state department of Natural Resources (DNR) to change funding for deer licenses so that reduction in deer herd size does not economically impact the DNR.

### Monitoring

A major emphasis of the Conservancy forestry program in the UP will be to assist in the development of criteria to be used in measuring the biodiversity value of sustainable forest lands. Forest management practices will then be monitored so that biodiversity measures become an integral part of the forest management plan. The Conservancy will also test and encourage state and federal partners to monitor deer populations thru biotic response rather than density estimates of deer that often underestimate the impact deer are having on a system.

*Editors Note: Is it just me or does this sound like the driving force behind QDM in the Upper Peninsula? JP*

# Understanding the Nature Conservancy's Conservation Plan for the Upper Peninsula of Michigan

## Editorial By "C.J." Williams

***What follows is a short synopsis of what appears to be happening to the Upper Peninsula land and waters at the hands of the Nature Conservancy (TNC). There is much to digest, but there is much more that could have been included. ~C. J. Williams***

TNC does a marvelous job of baiting the hook and pulling suckers in. The "stake holder's" (us) go to a negotiation table to beg for the right of traditional land use, which generally means the right to enter public lands by motorized access. There are trained TNC facilitators at these meetings, as well as numerous representatives from agencies that have partnered with TNC. The scale is tipped, and when enough of us don't show up to help those begging, miniscule concessions may be made for the short term, but, as citizens, we will all have lost the right to access or easily access our own public lands.

Noisy, polluting, sportsmen are targeted at first, but we have now learned that cross-country skiers actually also disturb wildlife, which is claimed to need rest to retain strength during the winter months. Eventually...all humans will be kept out of a great deal of the land purportedly "protected" for public use.

Over the years TNC has spawned many companies who are then contracted by state governments to also facilitate TNC's plan to re-wild America, as much as possible. To the condition they believe it was prior to Columbus' discovery. As best as can be determined, TNC is immune from prosecution and appears to have pretty free reign over whatever they decide to do in the name of eco-systems, people be damned. Paper is to be made from straw and the fluffy stuffing in your comfy pillows are to be replaced with downy seeds of the milkweed plant. One industry mentioned to replace logging is the harvesting of mushrooms and people will pay to pick. Outdoor "adventure" recreation will not include hunting, fishing, trapping, snowmobiling or any other "get out and get trekking through the forests and fields"; it will be "eco-touring" and stopping at "wildlife viewing sheds", that is if your one of the lucky ones allowed out of the little sustainable eco-communities that centered in the bigger urban areas of certain states.

Forestland Group, a timber investment company managing its holdings for profitable investor gain, has acquired a great deal of land in the UP, as well as many other states. In MI, Forestland is now offering its holdings to the state and other local governments, generally with the help of TNC who will then magnanimously offer to "protect and preserve" the purchase. Most often, the transaction will include a conservation easement in perpetuity, which restricts how that land can be used, even if later transferred to another party. The CEO of Forestland Group is a former highly placed senior executive with TNC. Gov. Engler wanted 390,000 acres Forestland now owns, and by already having investigated the original sale a couple of years ago, it appears history is repeating itself, perhaps at a greater profit, with Granholm, the DNR, and its TNC part-

ner.

The DNR gets money to purchase land or easements through the Natural Resources Commission Trust Fund Board. Steven Hamp, who sits on that board is also a board member of the MI branch of TNC. Another, Sam Washington, is the CEO of the Michigan United Conservation Clubs, which appears to be facilitating Agenda 21 in MI. MUCC is an affiliate of the National Wildlife Federation (only one conservation group allowed per state,) and the NWF and TNC are both partners of the UN's International Union for the Conservation of Nature. The IUCN is implementing the Biodiversity Treaty, the Wildlands Project, Sustainable Development, and Agenda 21 all over America.

In the U.P. TNC Conservation Plan report they list only 4 targets. However, these 4 targets provide what they refer to as "nesting areas". While we might think of "nesting" as relating to birds, this is not the case here. Each target is selected to blanket other species habitats also, and that is what is meant by "nested".

In the pecking order, wolves would be right under man in the carnivore category. So when wolves are targeted for ecosystem protection, there certainly are a lot of other species and their habitats nested within the wolves' habitat. Next to man, wolves are at the top of the food chain and all under are contingent on another, and on down the line right to the grass, moss and what ever habitat it needs to sustain itself, bugs and spiders alike.

As far as Red Crossbills, it appears they prefer "old forest" habitat and so TNC is attempting to regenerate old forest growth. I'm not a logger, but my understanding is that a great deal that should be logged isn't. The forest understudy, if allowed to return to a natural state, is an extreme fire threat... but then, managing ecosystems by fire is part of TNC's plan. They want no human interference with wildfires and no human interference with flooding. They are also at work all over the nation, partnering with the Army Corps of Engineers; removing dams or doing what ever they feel is necessary to put things back as "nature" intended. The Neo-tropical migratory birds would be the nesting targets for any matter of things in wetlands and semi-wet (mesic) areas. These birds include geese and other migratory species. TNC and it's partners are working to control the Great Lakes Basin fresh water resources and whatever land type surrounds it, including the forest and agriculture land in the U.P.

Bio-reserves are developed around the core Biosphere. There is a Biosphere at Isle Royale and also one at the very tip of the Lower Peninsula. Humans pose the greatest threat to Bio-Reserves. We destroy the habitat of all other things by our actions...mining, logging, building homes, putting in a culvert, septic systems, and even going into the

woods to hunt or pick berries, and also to and on the lakes and streams to fish. TNC may want you to believe you will always and forever be able to access our public lands by traditional means, but then along will come their cohorts with stricter and stricter environmental laws until your access is relegated to "view sheds" and stay on the path signs during escorted sight seeing strolls to enjoy your "protected for the public land". There is so much more, but a great deal of it points back to the UN's Biodiversity Treaty, which Clinton signed, but Congress never ratified. There are many such treaties and UN Programs/Projects. In fact, I've just come across the UN's Dams & Development Program, which deals with watersheds.

TNC will "partner" with any local government agency looking for a grant to buy land... then they move in and offer to "protect" it. As I understand it, they do not have to pay property taxes on what they own, but may offer to pay them to hide vulture mentality. Later, they can renege on the offer and local governments have no recourse. In any of their literature that they put out, just substitute the word "control" for protect...

"Working forest backdrop" is really the entire U.P. Working forest doesn't mean there will be normal logging procedures. It means there will be very selective cutting to "control", not protect, the UP for all nested "targets". Efrogmson is deceased, but his legacy lives on through workshops. Deer, as well as people, stress ecosystems and all wildlife walking on four hooves are to be eradicated on 90% of semi-wet to wetlands within the next 10 years. I firmly believe that the DNR has purposely been reporting deer population numbers far above what really is there, purposely issuing far too many doe permits, and intentionally causing us to help eradicate our whitetail deer herd.

TNC is not truly interested in all the little wood rats and lady bugs in the world's ecosystem. They're interested in destroying our property rights and constitutional rights so that our land can be turned over to the UN so our resource wealth can be controlled. Countries with a democratic form of government are the hardest to get under control. But, if all goes according to the international schemers, we will be treated much as the deer, with the human population reduced by as much as 40%. Yoopers will not live above the Mackinaw Bridge; they will live in sustainable eco-villages clustered around Detroit.

If you have any questions or would like research links to what I write about, please feel free to contact me. I may not have an answer to your question, but if not I'll do my best to find one for you. ~Cj. *Editors Note: CJ has been actively researching TNC, it's partners, and the eco-sociopath movement for several years, particularly in the Upper Peninsula. Even though she has been sounding an alarm about the eco-Nazis, few in the U. P. have taken her warnings seriously. Perhaps now we will listen.*

# Gasoline Supply and Demand by the American Petroleum Institute

Gasoline helps power the American dream, giving you the freedom to travel where you want and when you want. Cars, light trucks, boats and recreational vehicles transform gasoline's stored energy into fun and utility touching every aspect of our lives.

Following are some of the factors affecting the amount you pay for gasoline:

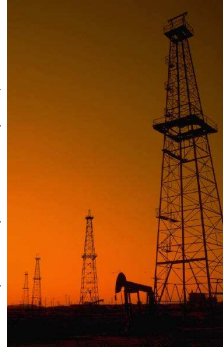
- Federal and State excise taxes account for an average of nearly 40 cents per gallon. County and local taxes may also apply.
- When crude oil prices are

stable, gasoline prices tend to rise gradually before and during the summer, when people drive more, and fall again in the winter.

- Crude oil prices are determined by global factors, including the policies of the Organization of Petroleum Exporting Countries (OPEC). The members of OPEC – who hold approximately two-thirds of the world's estimated crude oil

reserves – work to keep prices steady by controlling production.

- Short-term price spikes occur when demand rises unexpectedly or production problems (including international political instability) interrupt the flow of crude oil to refineries.



The Cost of Living comes back to the cost of fuel.

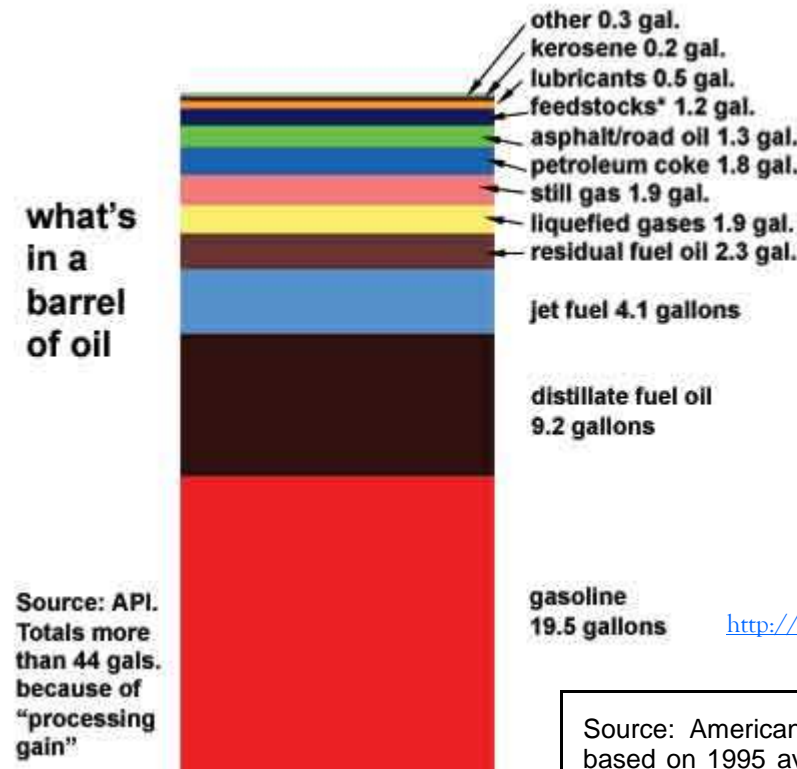
- Gas prices tend to vary from region to region, depending on proximity to

crude oil supplies, local competition and State or regional environmental programs, such as reformulated gasoline requirements aimed at reducing air emissions.

*Editors Note: The information was taken from the API web site. There are no answers why U. S. companies charge the same price for a barrel of oil as like OPEC group.*

*In an e-mail it was suggested that we buy from oil companies that use domestic oil and boycott the ones that use imported oil. If the U. S. companies wanted to compete, we would indeed line-up at their pumps. JP*

## What comes from One Barrel of Crude Oil?



According to the U.S. Department of Energy (DOE), the average cost of finding and producing a barrel of oil from a new field fell from \$12 to \$16 in the 1970s and 1980s to \$4 to \$8 today. And, in the past decade, the likelihood of an exploratory well resulting in a producing well has increased five-fold. DOE says that over the past two decades refining and marketing operating costs have fallen by about one-third.

Advanced steam injection techniques are cutting the costs of producing oil from tar sands, vastly increasing recoverable oil resources. It has been estimated that tar sands in Alberta, Canada alone contain substantially more oil than all of the proven oil reserves of Saudi Arabia.

<http://api-ec.api.org/newsplashpage/index.cfm>

### PUMP PRICE UPDATE

<http://api-ec.api.org/filelibrary/Pump%20Price%20Update%204-04>

Source: American Petroleum Institute (www.api.org). Figures are based on 1995 average yields for U.S. refineries. One barrel contains 42 gallons of crude oil. The total volume of products made is 44.2 GALLONS - 2.2 gallons greater than the original 42 gallons of crude oil. This is called "processing gain," where other chemicals are added to the refining process to create the products.

# Granholm's incompetence takes Michigan from first to worst

Michigan Republican Party Chairman Saulius "Saul" Anuzis questioned if Governor Jennifer Granholm plans to do anything to curb the continual loss of jobs afflicting Michigan's families.

"It's a sad day for Michigan," said Anuzis. "We all want to see Michigan be the beacon of opportunity it was just a few short years ago, but Jennifer Granholm's job recession has put an end to that. Her inaction comes at the cost of Michigan's hard-working men and women."

Jennifer Granholm today,

with the Department of Labor and Economic Growth, announced that Michigan's unemployment rate has risen to 7.5%, the highest rate since 1992. Further, 22,000 more Michiganders lost their jobs, bringing the total number of unemployed in Michigan to over 400,000. Granholm's failure to grasp the enormity of the problem was on display as she proclaimed, "It's a mixed bag on jobless numbers."

"A mixed bag?" continued Anuzis. "It's a garbage bag, and it's time the Governor recognizes that. Michigan needs a leader, but unfortu-

nately we have Jennifer Granholm." (Michigan GOP)

The added note about our beloved Governor is that she won several U. P. counties even though she couldn't find us on a map.

This discerning facts about the 2002 Yooper's support:

POSTHUMUS—GRANHOLM			
ALGER	1,623	1,855	
BARAGA	1,170	1,263	
CHIPPEWA	5,357	5,428	
DELTA	6,590	6,862	
<b>DICKINSON</b>	<b>4,358</b>	<b>3,882</b>	
GOGEBIC	2,308	3,292	
HOUGHTON	5,119	5,026	
IRON	2,017	2,429	
<b>KEEWENAW</b>	<b>545</b>	<b>482</b>	
LUCE	889	1,016	
<b>MACKINAC</b>	<b>2,425</b>	<b>2,206</b>	
MARQUETTE	8,906	12,779	
<b>MENOMINEE</b>	<b>3,576</b>	<b>3,335</b>	
<b>ONTONAGON</b>	<b>1,334</b>	<b>1,301</b>	
SCHOOLCRAFT	1,468	1,701	



## Outspoken Sportsman Defies Incompetence

Bill Moore is the Outspoken Sportsman heard in Escanaba, Iron Mountain and Manistique every Saturday morning from 0800-1200, that is unless he's on his death bed; which he was a few months ago. But, like Bill says, "I'm like a bad penny that just keeps coming back." The DNR may have had their hopes up, but Bill still defies incompetence.

Bill is not your typical radical. He collects facts, double checks them and then shares them with his audience. Reacting to facts rather than emotions has made him a rightwing icon in the UP.

Bill is an individual that truly appreciates the fine resources that are offered throughout the UP, but the DNR has taken the fun out of participating in outdoor sports.

He is particularly astute at upsetting Michigan's DNR with his lack of respect for the job they do as opposed to the jobs they were hired to do. "They just took the fun out of sports." Bill proclaims. Like most people who have reached middle age, many can recall the firearms deer season brochure was a pamphlet; now it's a book that requires a law degree to interpret it.

Bill said he may very well have the largest funeral the UP has ever seen because the every DNR person from all over the State will want to line up just to make sure he is dead.

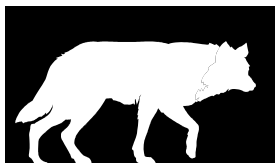
But the fire is difficult to put out. Bill has shown what a tough old purpose-driven person can do when they set their mind to it.

The Outspoken Sportsman has created a covey of loyal listeners and a regiment of informed citizens. Bill's expectations will never be compromised by true Americans.

The Gray Wolf population has been on the rise, particularly on the western side of the UP. There had been initial denials, than an admission, followed by another denial that "nuisance wolves" were transported from Minnesota to the Western UP.

The re-introduction of the Gray Wolf is not an accurate term to use since we border Wisconsin and they have a relatively healthy and active wolf population. That would imply their range includes a significant portion of the UP. But, the problem is the relocating of what is defined as "Nuisance" wolves to the UP.

## Re-introducing the Gray Wolf



**The Gray Wolf population in the UP has sustained itself for centuries; now we have misbehaving wolves mixed in.**

The problem is that the DNR has permitted defiant animals to imprint their defiance on the new generations of wolves.

Wolves have had a relatively good relationship in the UP. In the 1960s a pack of Timber wolves ran by two young kids on their bikes in a Gwinn area neighborhood. Thirty years later, wolves are still on the run in the area and a police officer had frequently seen a young Timber cub south of Little Lake; the cub had quickly become a thriving young adult.

Wolves and people in the UP have coexisted for well over two centuries. The vastness of the UP and good deer population had managed to

sustain the wolves. The life-long resident wolves had not earned a reputation of killing cattle and pets, but the transplants seem to be the juvenile delinquents of the wolf gang.

The problem with many of the decisions made by the DNR comes down to their scientific knowledge but lack of common sense. When any animal becomes comfortable around humans and their habitat, the animal has to be dispatched (killed), not only because of the threat that the animal portrays, but because of imprinting instincts on the animal's offspring.

~J. Powers

# U.N. Biospheres: A Scheme to Control People and Their Land

Editorial By: C.J. Williams

President Reagan pulled America out of UNESCO in 1984 because he believed it was totally corrupt. Perhaps bending to pressure of those behind the UN's throne, George Bush returned our country to UNESCO in 2002, stating he was doing so as a "symbol of our commitment to human dignity...this organization has been reformed and America will participate fully in its mission to advance human rights and tolerance and learning."

Because "we've" rejoined the U. N. Educational, Scientific, and Cultural Organization, it's Man and the Biosphere Program (MAB), which never really halted, will likely move full speed ahead in Michigan's Upper Peninsula. Biospheres, however, are listed only at the request of the country in which they're located, and can be removed from the biosphere reserve list at any time by a request from that country.

A U.N. Biosphere is a designated core area, usually federal public land operated by a government agency, generally the National Park Service. Biospheres can encompass a National Park, National Forest, Heritage Site, Historical Park, Scenic Highway, Wilderness Area, Designated Wetland, Wildlife Preserve, or a combination of these and/or several other things. The trend now is also to include public state and local municipality land as part of a Biosphere Reserve.

Through the acquisition of more and more public federal, state and municipal land and subsequent control of how it's used, Biosphere perimeters expand; they're never stagnant. Biospheres can overlap into great swaths of controlled land, thousands of miles in all directions. MAB's object is to gain jurisdiction over the Earth's entire surface and control resources, such as air, water, land, minerals, and all forms of life, including human beings.

Biospheres act like "living laboratories" for the "scientific" testing of targeted bio-geographical ecosystems, guaranteeing the conservation of biodiversity through research, monitoring, and "training" activities, or so it's claimed. In truth, the conglomeration of international MAB land grabbing thieves'

end goal is to hold the Earth's entire land and air surface hostage as they manipulate people into cooperating with their scheme, one way or another.

To control Bio-Reserve integrity, land use must be severely restricted or halted altogether because human activity is the greatest stress factor that destroys the essential wholeness of various eco-systems within the Biospheres. The denial that humans will not be severely affected by activity abatement, as more land control is exerted, will ultimately prove to be a lie should this be allowed to continue.

UNESCO's MAB Program is a world network of Biospheres controlled through the partnership of international governmental agencies and non-governmental organizations (NGO's) collaborating to keep the manipulative scheme rolling at the national, state, or local level. Some NGOs are the Nature Conservancy, Defenders of Wildlife, and the National Wildlife Federation, which consists of affiliated conservation clubs, one per state. In Michigan, NWF's affiliate is the Michigan United Conservation Clubs, comprised of more good old boy sportsmen's clubs than conservation clubs

The World Bank supports the grandiose MAB scheme, as does the UN Environment Program, the UN Development Program, the Food and Agriculture Org., the World Conservation Union (IUCN), Conservation International, and the World Wide Fund for Nature (WWF).

The U.S. government agencies and NGO supporting partner list of IUCN is exhaustive, and several can be identified as threads of a tangled partnership web, most involving the Nature Conservancy, now very busy at work controlling or helping to control U.P public land while trying to convince all that their heart is pure.

The MAB scheme involves many individual projects, such as the Great Lakes Basin Project. This effort began in '95 at the instigation of the National Park Service who requested that the Isle Royale Biosphere be elevated to fully functional status. The project is now an internationally directed bi-national plot to control land use and water resources in each of the eight

states and Canadian provinces surrounding the Great Lakes and the tributaries running into each.

Partnering organizations, including certain Tribal agencies, are using the "Watershed Approach", attorneys well versed in environmental law, and increasingly restrictive environmental mandates to force humans to accept land uses restrictions. Those who balk at the land grabs and use restrictions are purposely made to feel guilty of not wanting to protect the environment and fresh water resource.

The partners are marching right around the Great Lakes, watershed by watershed, using the two designated Biosphere Reserves at Isle Royale and the tip of the Lower Peninsula, as well as several others in Canada as core areas. Almost every Biosphere from coast to coast is situated where there is an important water resource, and new Biospheres will be designated unless citizens become irate enough to force Congressmen to halt to the whole U.N. Biosphere business in America.

In 1968, just prior to Nixon's election, there was a UNESCO "Biosphere Conference" and the Biosphere Reserve concept was laid out. In 1970 the UN's Man and the Biosphere program surfaced to set this reserve scheme in motion. The U.S. joined the MAB Program in 1974 when our State Dept. signed a "Memorandum of Understanding" (not a treaty) and pledged that the U. S. would adhere to Biosphere conditions and limitations laid down by UNESCO. Nixon, of Watergate fame, was President at the time.

There's no national law mandating that Biospheres be designated in the U.S. Regardless, through a "Memoranda of Understanding", and at last count, there are 47 UN-US Biospheres that we know of. Twenty-seven were designated in 1976 during the Nixon years. Oddly, another 11 were designated during the Regan years. Excepting, perhaps, one or two, the National Park Service rules over all

The University of Michigan Biological Research Station became a Biosphere in 1979 after Carter took office, as did Isle Royale in 1980. The Research Station encompasses an area from Mackinaw City on down to a line running east and west below the Petoskey/Charlevoix

area.

Although no concrete information could be found about who nominates Biospheres, it's purported that locally established committees usually coordinate the initial planning and prepare the nominations. Letters of concurrence from local interest groups and local and state government representatives are attached to each nomination package. Landowner approval is required for a property to be included. The package is then submitted for approval to the U.S. Man and the Biosphere Program, based at the U.S. Dept. of State, in Washington, D.C.

U. S. MAB Bulletin, July '97, Vol. 21, #2, contains the following information: "The long-term goal of the U.S. MAB Program is to contribute to achieving a sustainable society early in the 21st Century." (Agenda 21) It also includes a farewell from the US-MAB Committee Chairman, Dean Bibles, who at the time was director of the U.S. Dept. of Interior's policy on land tenure and also special assistant to Interior Secretary, Bruce Babbitt.

More intriguing info in that bulletin is the introduction of the new National MAB Chairman, David Hales, who was appointed to a three-year term as Chairman of the U.S. National Committee for the MAB Program. Previously, Hales had been Director of the Michigan DNR from 1988 -1991 and had served as a board member of the Michigan Chapter of the Nature Conservancy.

As more and more research is done, the tangled and deceitful webs of scheming partners and interpersonal relationships of those putting the U.N.'s Agenda 21 in place in Michigan is becoming much easier to follow. Even the partnering EPA is now suspected of skewing scientific data used to shut down or punish more and more industries. It really might not be a bad idea to get in the face of all of our state representative and senators and demand accountability for what they're allowing to happen in Michigan.

*Editor's Note: There is more to this story than what CJ could provide; we will publish additional articles as they come in. Fascinating!*

## EPA Refuses to Release Results of Scientist Surveys Group Sues to Force Disclosure of Polls of Agency Scientists

By: Public Employees for Environmental Responsibility (PEER) Published: Fri, 1 Apr 2005

The U.S. Environmental Protection Agency is illegally blocking the release of internal surveys of its own scientific staff, according to a federal lawsuit filed today by Public Employees for Environmental Responsibility (PEER). PEER had requested copies of extensive employee surveys conducted in 1999, 2001 and 2003 within the EPA Office of Research and Development. ORD consists of a network of laboratories and research centers comprised of approximately 2000 scientists in which much of the agency's basic and applied science concerning pollution monitoring, toxicological effects and other public health issues.

According to agency scientists, the surveys covered a range of topics concerning how EPA conducts its science, including questions on scientific integrity and quality, the adequacy of resources and the effects of management practices on employee morale. The three sets of surveys taken over six years would also allow comparison of scientist perceptions during both the Clinton and Bush Administrations. The PEER suit, filed under the Freedom of Information Act, contends that EPA has no legal basis for withholding survey results. EPA is even refusing to disclose copies of the questions posed to agency scientists. The agency contends that the survey materials are pre-

decisional and thus exempt from release. — end

I've been saying this for quite sometime. How do we know that their "science" isn't skewed? This agency was part of a lawsuit filed against the White Pine Mine here in the Copper Country. Between all the new and restrictive environmental laws and the declining price for copper, the White Pine Copper Mine closed its doors, leaving what was a new and thriving town to become a ghost town. It sat on top of the richest vein of native copper in the world.

The lawsuit, which I believe was brought by the MI-DNR, the Michigan United Conservation

Clubs, and the EPA, was settled out of court with those millions going into the Keweenaw Land Trust Fund to enable some more public land grabbing and control. The MUCC, MI-EPA, MI-DEQ, and TNC seem to travel as a pack here in the UP. And, for that matter, who is validating NatureServe's data. NatureServe is under contract with the state of MI to provide a data base for environmental conservation science. Supposedly it's of benefit to the DNR.

NatureServe was spawned by TNC, which I'm sure uses that data base while crawling through the forests and fields and slithering through the wetlands looking for all the endangered, threatened, and uniquely sensitive species they purport are here in this state. My guess is that a great deal of NatureServe's data is skewed, as well. ~Cj

## Only the Procedures Differ; Battling the Leftwing Kooks

We can always get there from here, but how we do it has two distinct versions. The first way is through an honest moral education, hard work, charitable works and contributions, family values, morality, respect for life and the elderly, human dignity and sharing what we have.

The second route, known as the leftwing route, places many mandates on sovereign governments and its people, dictates social policy through a systematic elimination of God and morality, often with the blessings of the courts, the removal of family values, the desensitizing of citizens with

constant exposure to what is the exact opposite of what is good and decent and admits that human beings are not only stupid and unworthy of access to the outdoors, but that all the problems lay at the heels of the sportsmen and women, gun owners, business, and God-fearing citizens.

*“ . . . Human beings are not only stupid and unworthy of access to the outdoors. . . ”*

## President Bush may be from Texas, but he ain't actin' like a Texan

By J. Powers

It starts off this way: “Anti-Mexican bigots are creating a dangerous situation along the US/Mexico border that threatens the peaceful co-existence between Mexicans and the U.S descendants of immigrants from Europe.”

To think the volunteers mustering at the border were there to stop an illegal activity may be a mistake. Even Presi-

dent Bush called the border heroes “Vigilantes”.

The leftwing kooks are back to carrying signs and making unsubstantiated allegations about the volunteers, armed only with binoculars and cell phones. The substantial decline in illegal crossings in the area is a sign it works.

Even the Mexican patrol have been roaming the border

to turn illegal immigrants back.

What this group of so-called “Vigilantes” has done is bring the issue to the headlines and as any good citizen should do, hold their public servants to the highest accountability standards and to encourage deadbeat politicians to get off their lazy butts and start to address the issue of illegal aliens infiltrating this country at a cost of billions of tax dollars annually.

